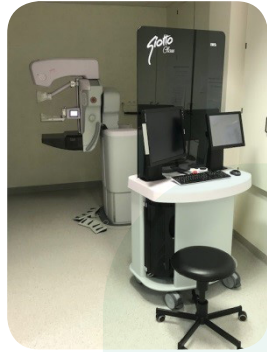


## Mammography



A mammogram is an X-ray of the breast taken in two different directions. For good quality images, the breast needs to be compressed to some extent. Especially in the period before menstruation, this can be somewhat painful.

This is because the glandular tissue may be slightly swollen during this period. Swollen glandular tissue can also complicate the assessment of the images. Therefore, it is advisable to schedule the appointment for a mammogram in the first half of the menstrual cycle.

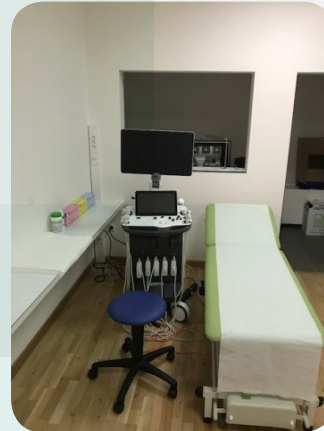
If there is moderate or a lot of breast glandular tissue present, the examination is often supplemented with an ultrasound. This is necessary to obtain sufficient additional information.

### By appointment:

Monday and Wednesday: 8:30-12:00, 13:30-16:00

Tuesday, Thursday and Friday: 13:30-16:00

## MC Elewijt (RX, mammo, echo)



RX Monday, Wednesday, Friday: 8:30-12:30

RX Tuesday, Thursday: 13:00-17:00

Echo Monday, Wednesday, Friday: 8:30-12:30

Echo Tuesday, Thursday: 13:00-17:00

### By appointment:

T 015 64 68 03 MC Elewijt



# The radiology department

Radiology appointments: T 02 257 51 00

Monday to Friday: 8:00-17:00

[www.azjanportael.be](http://www.azjanportael.be) (healthcare services/radiologie)



## Conventional radiology

Conventional radiology is a photographic technique that uses X-rays and finds its application in imaging of the bones, lungs, gastrointestinal system, kidneys and bladder, vascular system, and breasts.

### Open consultations

Weekdays 8:00-18:00



## Ultrasound with duplex

Ultrasound is a diagnostic method in which cross-sectional images of organs are created using sound waves. This technique is mainly used for the examination of solid organs (liver, kidneys, spleen, thyroid, breasts, ...) and vascular imaging (duplex).

### Op afspraak:

Weekdagen 8:45-17:00

## CT-scan



Computed Tomography (CT) is a technique that also involves the use of X-rays. However, this application focuses on creating cross-sectional images of any region in the body. Important applications include examinations of the brain, lungs, spine, and abdominal organs. AZ Jan Portaels utilizes a low-dose CT with artificial intelligence, emphasizing both diagnostic accuracy and minimizing radiation exposure.

### By appointment:

Weekdays: 7:00-18:00

## Magnetic Resonance (NMR)



Magnetic Resonance Imaging (MRI) is a technique that forms images using radio waves in a strong magnetic field. This technique is very safe, can create cross-sectional images in all planes in space, and is particularly suitable for examining the spinal cord, brain, joints, and soft tissues (muscles, ligaments, etc.).

### By appointment:

Weekdays: 7:00-21:30

Saturday, Sunday: 7:30-16:00

## Bone densitometry

Bone Densitometry is a test to measure bone density. The examination takes 15 minutes and uses X-rays. However, you are exposed to very few rays.

Scores are obtained and compared to reference populations, allowing the doctor to determine if you may have low bone density.